

FOR LEASE

SHILPA EMERALD

EXCLUSIVELY MARKETED BY FIDELITUS CORP



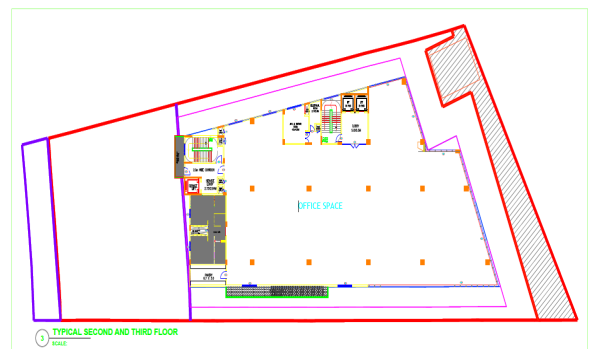
70,865 Sq.ft
Ready for fit out by
Q2, 2018



PROJECT HIGHLIGHTS

- Project strategically located in one of Bangalore's fastest developing Commercial / IT/ ITeS growth corridor.
- Prime Commercial office space of 70,865 Sqft spread across 4 Floors with floor plates of ~15,736 Sqft to 18,767 Sqft leasable area & efficient floor plate, Ready for fit outs by Q2 2018.
- Warm shell office space with highly competitive Commercial and Technical specifications.
- Excellent Frontage and Visibility from Hosur main road, Electronic city flyover.
- Excellent Social Infrastructure with Residential catchment, Educational Institutions & Hospitals.
- 148 car parking accommodated in the Basement.
- Fit outs- land lord will invest on brand new fit outs.
- 17,204 Sqft cafeteria space available at terrace.

PROJECT FLOOR PLAN



LOCATION COORDINATES



CONTACT :

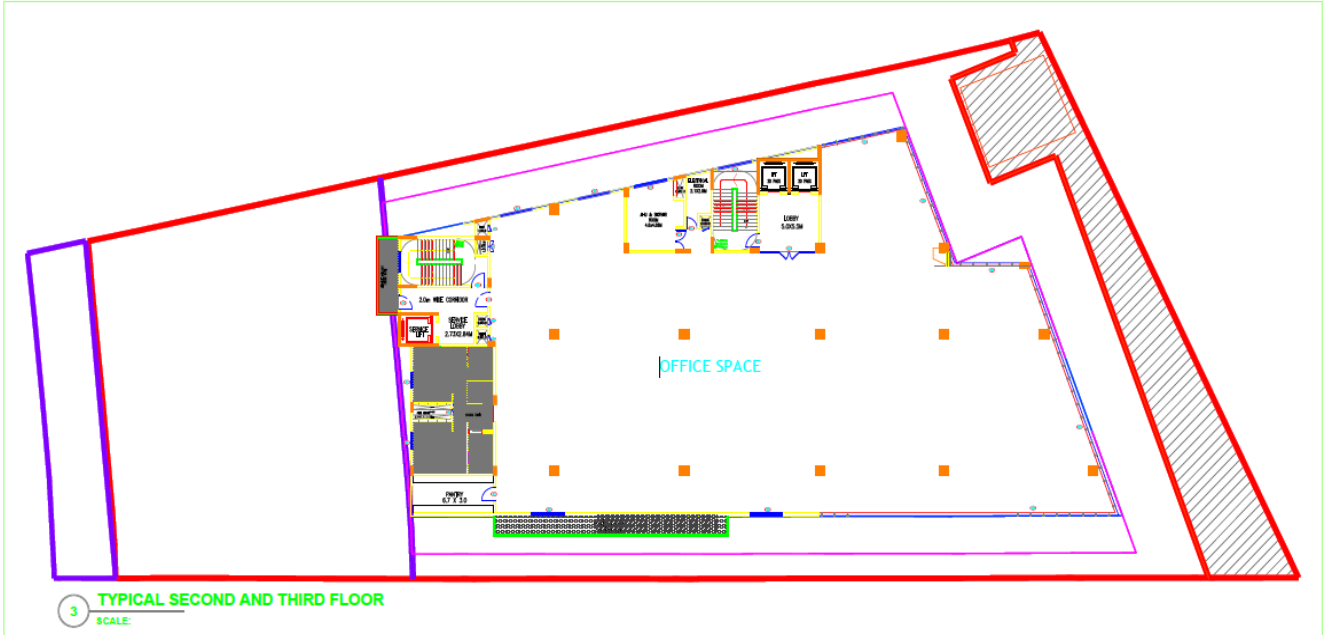
Vinay KV
+91 9845094646
vinay.kv@fidelituscop.com

Rubin Mathew
+91 9845562506
rubin.mathew@fidelituscop.com

SHILPA EMERALD

EXCLUSIVITY MARKETED BY FIDELITUS CORP

PROJECT FLOOR PLAN



LOCATION COORDINATES



CONTACT :

Vinay KV
+91 9845094646
vinay.kv@fidelituscop.com

Rubin Mathew
+91 9845562506
rubin.mathew@fidelituscop.com

© Copyright 2018, FCPL. This information has been obtained from sources believed reliable. We have not verified it and make no guarantee, warranty or representation about it. Any projections, opinions, assumptions or estimates used are for example only and do not represent the current or future performance of the property. You and your advisors should conduct a careful, independent investigation of the property to determine to your satisfaction the suitability of the property for your needs. Photos herein are the property of their respective owners and use of these images without the express written consent of the owner is prohibited.